

# SUBDIVISION PLAN OF LOTS 20, 21 AND 26 SECTION 24 TOWNSHIP 28 SIMILKAMEEN DIVISION YALE DISTRICT PLAN EPP97496

PLAN EPP119895

BCGS 82E.073



The intended plot size of this plan is 432mm in width by 560mm in height (C size) when plotted at a scale of 1:300.

This Plan lies within Integrated Survey Area No. 4, City of Kelowna, NAD83 (CSRS) 4.0.0.BC.1.

Grid bearings are derived from differential GNSS observations and are referred to the central meridian of UTM Zone 11.

The UTM coordinates and estimated absolute accuracy achieved are derived from MASCOT published coordinates and standard deviations for geodetic control monuments 02H2371 and 02H2391.

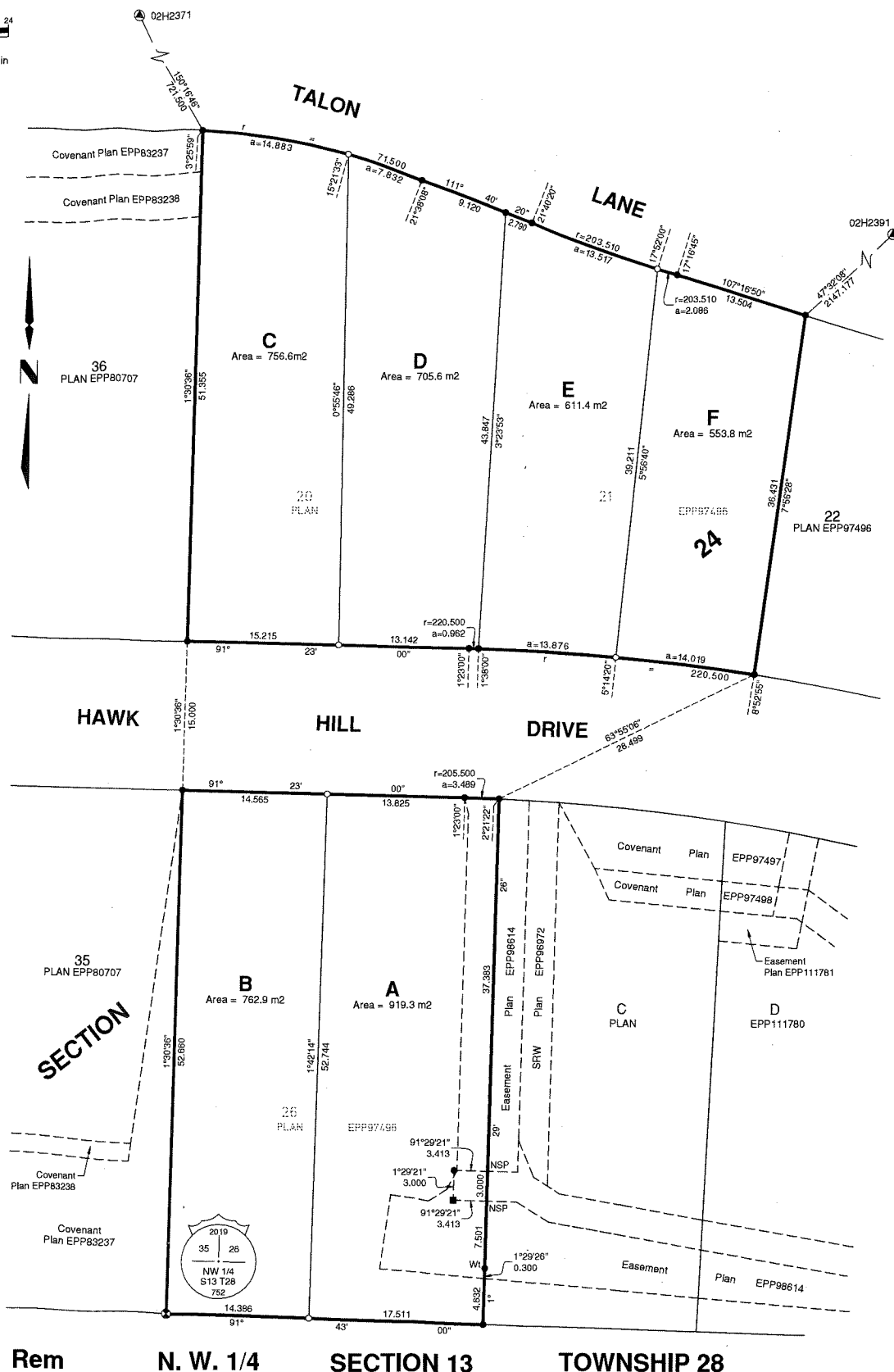
This plan shows horizontal ground level distances, unless otherwise specified. To compute grid distances, multiply ground level distances by the average combined factor of 0.9999100. The average combined factor has been determined based on an ellipsoidal elevation of 524 metres.

## LEGEND

- ▲ denotes control monument found
- ⊙ denotes standard capped post found
- denotes standard iron post found
- denotes lead plug found
- denotes standard iron post placed
- NSP not suitable for posting
- m2 denotes metres squared

Note: This plan shows one or more witness posts which are not set on the true corner(s).

Datum: NAD83(CSRS) 4.0.0.BC.1		UTM Zone 11 North	
Point	UTM Northing	UTM Easting	Absolute Accuracy
02H2371	5518869.828	319341.896	0.02
02H2391	5519674.272	321344.133	0.02



Rem N. W. 1/4 SECTION 13 TOWNSHIP 28

This plan lies within the jurisdiction of the Approving Officer for the City of Kelowna

This plan lies within the Regional District of Central Okanagan

The field survey represented by this plan was completed on the 2nd day of April, 2022.

G.M. Hobbs, BOLS 752



202 - 1475 Ellis Street  
Kelowna, BC

PROJECT REF./DRAWING No.  
20-W0818-001-SUB02